

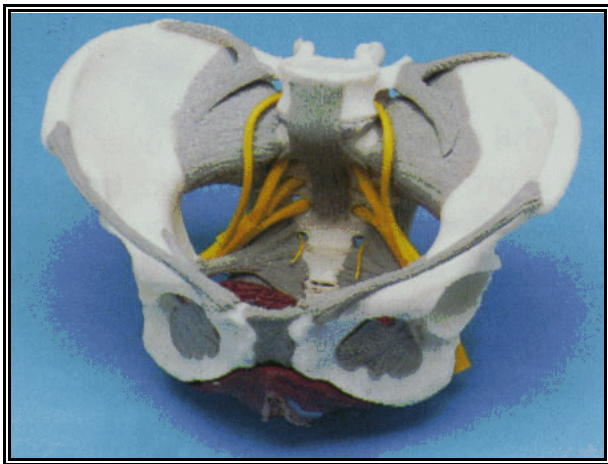
Teaching Models and Manikins

for incontinence therapy

You can expect better compliance from your patients when they have a good understanding of their specific condition. By using a life-like model of the pelvis, you can more effectively explain the pathology involved.

Add to the professional appearance of your clinic and be assured that your patients will remember your explanations. Save time in showing the function of the muscles, nerves and connective tissue. These high quality models are excellent patient teaching aids for urologists, general practitioners, physiotherapists, urology nurses and continence advisors.

For teaching manual assessment techniques and palpation, a full-size manikin will give your students a consistent model. It is ideal for quantifying the muscular strength which is essential for maintaining continence. Students can practice repeatedly until they develop the needed skills. As well, refresher courses in clinical practice are more practicable to organize, more meaningful for the students and easier to present.

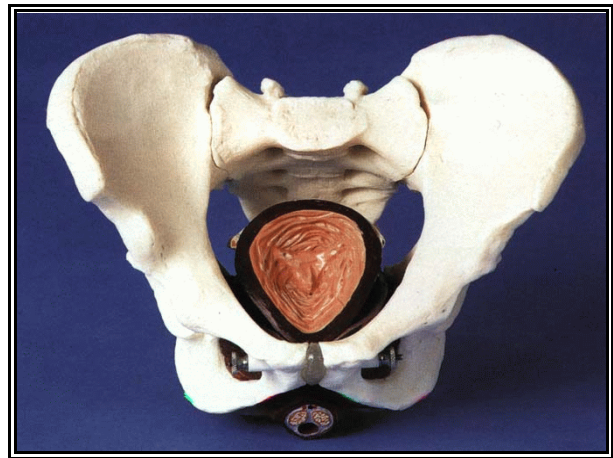


**Pelvis with Ligaments,
Nerves and Floor Muscles**
ZKK-269-M

\$525.00

A life size bony female pelvis showing the ligaments and the main nerves, with a removable two-part pelvic floor.

- It has detailed and dissectible pelvic floor with clearly visible nerves.
- Carefully coloured flexible material comprising genitalia and muscles.
- Distinct pelvic floor representation.

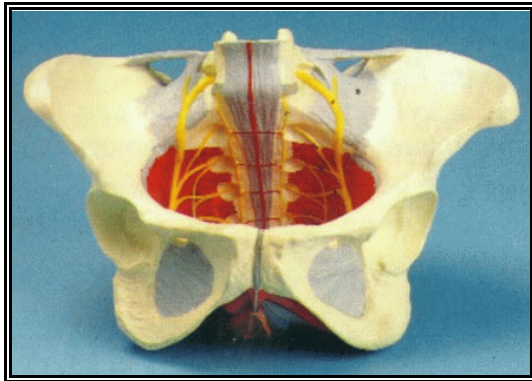


Dorey Male Pelvis and Pelvic Floor
ZKK-270-D

\$429.00

This new edition has been developed under the supervision of Grace Dorey MSc MCSP, who is internationally known for her work on the male pelvic floor.

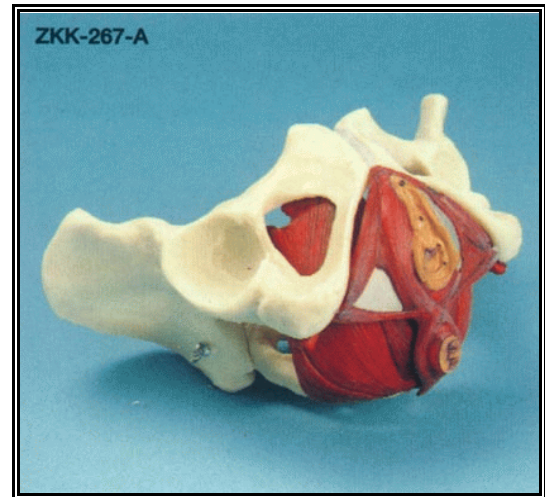
- It has a detailed and dissectible pelvic floor in carefully coloured flexible material.
- The pelvis separates into three parts.
- There is a removable section of the bladder with prostate and seminal vesicle.
- The muscle layers are in two parts and include the pubococcygeus, iliococcygeus, puborectalis, ishchiocavernosus, bulbocavernosus muscles and the anal sphincter.



**Ligmented Pelvis with Nerves
and Floor Muscles**

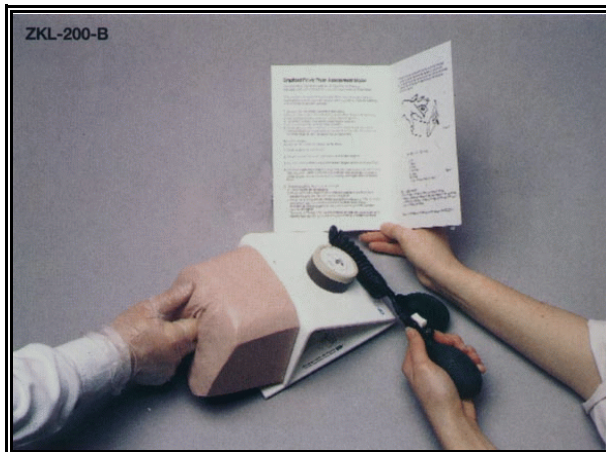
ZKK-264-S \$395.00

A finely modelled life size representation of the musculature, partially dissected, and ligaments of the pelvis and the associated nerves. Virtually unbreakable and carefully coloured, not dissectible, numbered with key.



**Composite Pelvis and Pelvic Floor
ZKK-267 - A \$ 408.00**

A complete life size female pelvis of synthetic bone-like material with a highly detailed and dissectible pelvic floor in carefully coloured flexible material comprising genitalia and associated muscles. Separates into 5 parts.



**Bradford Pelvic Floor Assessment Manikin
ZKL-200 - B \$925.00**

This manikin was developed in conjunction with Dr. Jo Laycock, Urotherapy Manager at Bradford Royal Infirmary, England. It is designed to help you teach pelvic floor muscle assessment to health professionals and self assessment to patients. Manufactured from a soft pliable plastic which has the texture of human tissues, the muscle contractions are simulated pneumatically by squeezing an inflation bulb. A calibrated dial, using a modified Oxford scale, ensures reproducibility. Instructions for use and a lubricant are provided. The manikin is mounted on a base with suction pads and is supplied in a plastic carrying case.